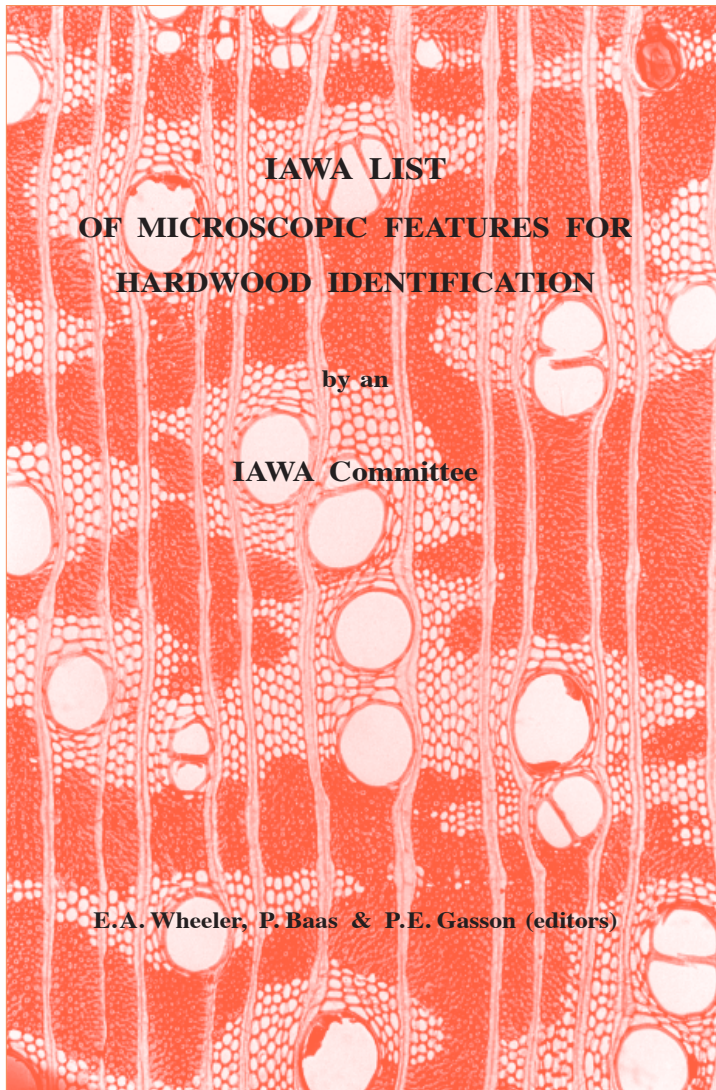


WOOD ANATOMY NEWS**IAWA Hardwood List free on the web**

The fourth print-run from 2007 of the *IAWA List of Microscopic Features for Hardwood Identification*, published by an IAWA Committee in 1989, is nearly sold out. And instead of reprinting it another time it has been decided to post the 'Hardwood List' on the web – free of charge – both on our www.iawa-website.org and on the InsideWood website insidewood.lib.ncsu.edu/search, maintained in Raleigh, USA by Elisabeth Wheeler.



IAWA as a partner in combatting illegal logging

One of the objectives of the 2nd Expert Group Meeting on Timber Analysis, organised by the United Nations Office of Drugs and Crime (7–9 October, Vienna, Austria), was to discuss how we as wood anatomists could join forces with other stakeholders to contribute to the global fight against illegal logging (see the report by Maaïke De Ridder in IAWA J. 36: 468–469). Since then, we have contacted you with regards to three aspects:

1. Wood anatomical expertise is declining in many countries, and we do not have a good overview where the wood anatomical expertise is available at a world-wide basis. Therefore, we are compiling a list of wood anatomists per country who are willing to contribute to wood identification issues. You have all been invited to add your name to the expert file. At this moment, 126 names have been added to the list, coming from 29 countries. There is still an opportunity to add your name to the expert list. The data will not be distributed without your approval. Please contact frederic.lens@naturalis.nl for more information.
2. As a second step, we want to update the information in the *Index Xylariorum 4* (compiled by Anna Lynch and Peter Gasson). Many of you have already adjusted outdated information on specific scientific wood collections, for which we are grateful. Please go to the link <https://drive.google.com/folderview?id=0BztRM8M0cMNYaWpnbEtkNDIvdXc&usp=sharing> if you have additional information that needs to be added.
3. We also would like to know how many wood anatomists have been involved in forensic research. The CITES Secretariat, in cooperation with the United Nations Office on Drugs and Crime and the Society for Wildlife Forensic Science, has developed a questionnaire to know more about the contribution of wood anatomy in the investigation of wildlife crime offences, and many of you have been asked to these complete questionnaires.

For more information, please contact rob.ogden@tracenet.org.

This initiative falls under the umbrella of WRAITH (IAWA J. 36: 467–468), which serves as a focal point and task force within IAWA on topics related to illegal logging and forensic wood science, and liaises with the broader scientific community and governments around the world to ensure that wood science, and specifically wood anatomy, makes the proper contribution to the global forensic efforts.

Frederic Lens

Special IAWA Journal Issue on Functional Traits

Issue 2 of this year's IAWA Journal will be entirely dedicated to *Functional Traits in Wood Anatomy*. The papers are mainly written by members of the Working Group on Functional Traits in the COST-action STReSS, which will present its final results at a meeting in Joachimsthal (Berlin), Germany in April (see below). Guest editors of the special issue are Hans Beeckman, Katarina Čufar, and Veronica De Micco. The issue will be dedicated to Sherwin Carlquist, whose research and ideas on ecological and functional wood anatomy have been an inspiration to all.

IAWA Bark List News

From 10–14 January four members of the IAWA Bark List Committee, Veronica Angyalossy, Pieter Baas, Ray Evert and Marcelo Pace, met at the home of Professor Evert in Madison, Wisconsin, USA to discuss the final draft of the Bark List and select critical illustrations to be published in IAWA Journal 37 (4) towards the end of this year.



Members of the IAWA Bark List Committee during a party at the home of Professor Evert: from left to right: Veronica Angyalossy, Ray Evert, Marcelo Pace and Pieter Baas (Photo: Regis Miller).

Future Meetings

World Wood Day 2016 in Nepal

The World Wood Day celebrations organised by the International Wood Culture Society (IWCS) will be on the 21st of March (coinciding with World Forest Day of the UN) in Kathmandu, Nepal. As usual there will be a scientific symposium (from 21–23 March) in addition to many cultural events and an international wood carving exhibition and competition. The theme of the symposium is *Nature and Culture: Interdisciplinary approaches to Peaceful Coexistence and Sustainable Development*. There are six main topics: 1) Historical Utilization and Cultural Heritage; 2) Wood Products and Traditional Practice; 3) Recovery and Restoration; 4) Economic Growth and Sustainable Development; 5) International and Domestic Challenges; 6) Art, Design and Architecture.

For more details, please visit www.worldwoodday.org/

COST-Action STReESS, final meeting

On 13 and 14 April the EU COST-Action on “Studying Tree Responses to extreme Events – a SynthesiS” (STReESS) will hold its final meeting in Joachimsthal (Berlin), Germany. This COST-Action, co-ordinated by IAWA Member Ute Sass-Klaassen, has been very successful in generating collaborative, interdisciplinary research on forestry science and tree biology, emphasising the crucial role of wood and phloem structure, function, and development. One of its earliest meetings in Naples was co-sponsored by IAWA and led to the much cited special IAWA Journal issue on “*Wood Structure in Plant Biology and Ecology*” (Baas, Battipaglia, De Micco, Lens, & Wheeler, eds., 2013). The forthcoming IAWA Journal issue on Functional Traits in Wood Anatomy, is another result of the successful cooperation between STReESS and IAWA.

For further information visit www.streess-cost.eu/

International Academy of Wood Science (IAWS) 50 years young

Readers are reminded of the Jubilee meeting of the IAWS in Paris from June 1–3, 2016. The conference covers “all aspects of wood science, *i.e.*, biology, chemistry and physics of lignified natural materials and products derived therefrom” (www.iaws-web.org). Over the last half century many IAWA members have been elected Fellows of the Academy, and there has always been a close and fruitful cooperation between IAWA and IAWS. At his stage it is befitting that the 85 years old IAWA offers the Academy its congratulations and best wishes for a brilliant future.

Salvador de Bahia 2016***IAWA Symposium: The hydraulic architecture of plants through time***

During the next World Congress of IPC and IOPC in Salvador de Bahia (Brazil) from 23–28 October, 2016, Jonathan P. Wilson, Anne-Laure Decombeix & Lisa D. Boucher will be convening an IAWA Symposium on *hydraulic architecture of plants through time*. They will soon solicit contributions fitting the themes of the symposium as outlined below.

Land plants function as integrated systems despite their ability to shed discrete organs in response to reproductive necessity or environmental stress. Roots, stems, and leaves work in a concerted physiological network that must often serve opposing needs. For example, with xylem there must be a tradeoff between efficient mechanical support and water transport. This session will explore how new fossil discoveries, novel qualitative and quantitative approaches to plant function, and experimental analyses of living plants together shed light on the evolutionary history of plant hydraulic architecture. Studies of land plants ranging from Silurian to the present, united by the theme of water relations – including anatomical, hydraulic, and environmental interactions – are invited. In palaeobotany, root, stems, and leaves are typically found isolated and there has been a tendency to focus on single organs, so we particularly welcome studies of whole plant hydraulics and anatomy. Presentations relating to single organs, groups of organs, or trends through time are also encouraged to foster discussion from different perspectives.

IXth PRWAC 2017 in Bali, Indonesia – with IAWS partnership

The ninth Pacific Regional Wood Anatomy Conference will be held from 26–29 September 2017 in Bali, Indonesia, organised by the Pacific Regional Group of the IAWA. Local host Prof. Nugroho Marsoem is actively searching for an attractive and affordable conference venue on this beautiful island. Following the very successful collaboration with the International Academy of Wood Science (IAWS) in earlier meetings in Montpellier (2004), London (2008), Madison (2010), and Nanjing (2013), IAWA and IAWS have again decided to join forces at the Bali Meeting.

ASSOCIATION AFFAIRS***IAWA dues payment via Pay per Link – safety first***

IAWA Members who used to pay their annual dues by credit card, will welcome the extra protection of their credit card information that is now offered through the “Pay per Link” option handled by PaySquare, which is now operational. Cees Lut has informed you personally of this new option, which comes in addition to the existing PayPal, Internet bank transfer, and US\$-check options already in place. Please make sure that you pay your 2016 and any other outstanding dues at your earliest convenience.

New e-mail address Emma van Nieuwkoop

From the 1st of March the e-mail address of our Desk Editor and publishing-liaison Ms. Emma van Nieuwkoop will change to *eevn33@kpnmail.nl*.

Updated IAWA Membership Directory

An updated pdf copy of the IAWA Membership directory can be requested from Emma van Nieuwkoop (*eevn33@kpnmail.nl*).

I.W. Bailey Award 2016
call for manuscripts and nominations

Early career wood anatomists (PhD candidates or researchers who completed their PhDs in 2010 or later) are invited to compete for the I.W. Bailey Award for best paper submitted to the IAWA Journal volume 37 (2016). This prestigious award consists of a certificate and 1000 USD and is sponsored by Brill Publisher.

Candidates may nominate their own submissions directly to the editors of the IAWA Journal (c/o pieter.baas@naturalis.nl) together with a one-page cv, and one supporting statement from a senior IAWA Member before September 1st, 2016.

Submissions will undergo the normal peer review process. The Award Committee will be formed by the Editors and Associate Editors of the IAWA Journal.

The first I.W. Bailey Award for the year 2014 has gone to Alexander Scholz from Ulm University, Germany. In 2015 the prize has not been awarded, because of the critical reviews of the submissions received.

ACKNOWLEDGEMENT OF REVIEWERS

The editors and associate editors wish to thank the following colleagues for reviewing manuscripts submitted to the IAWA Journal in 2015

Hisashi Abe	Dieter Eckstein	Ewa Mellerowicz
Clemens Altaner	Edgard Espinoza	Regis B. Miller
Veronica Angyalossy	Luis Garcia Esteban	Hugh Robert Morris
Estelle Arbella	Ray Evert	Ryogo Nakada
Jan Baar	Esther Fichtler	Satoshi Nakai
Pieter Baas	Patrick Fonti	Bernadette Nanayakkara
Chris Balhaus	Tomoyuki Fujii	Lee Ann Newsom
Marion K. Bamford	Ryo Funada	Mark E. Olson
Claudia Barros	Holger Gärtner	Marcelo Pace
Hans Beeckman	Peter Gasson	Tereza C.M. Pastore
Charlotte Björdal	John Hayden	Marc Philippe
Anaïs Boura	Pat Herendeen	Imogen Poole
Jez Braga	Frédéric Jacques	Peter Prislán
Achim Bräuning	Nathan Jud	Oris Rodríguez-Reyes
Brendan Choat	Peter Kitin	Fidel Roig
Bruno Clair	René Klaassen	Jakub Sakala
Alan Crivellaro	Gerald Koch	Uwe Schmitt
Katarina Čufar	Ekaterina Kotina	Adya Singh
Henry Cuny	Ling-Long Kuo-Huang	Rachel Spicer
Veronica De Micco	Keiko Kuroda	Tamara Vernimmen
Maaïke De Ridder	Silke Lantzer	Georg von Arx
Thomas Dillhoff	Frederic Lens	Elisabeth A. Wheeler
Lloyd A. Donaldson	Eduardo Longui	Alex C. Wiedenhoeft
Dirk Dujesiefken	Carmen Marcati	Michael C. Wiemann
Oliver Dünisch	Steve Manchester	Fukuju Yamamoto
Roland Dute	Paul McLean	Kiyotsuga Yoda